

DELTA-B

HAZARDOUS LOCATION LED

20W, 40W, 60W, 80W, 100W, 150W, 180W, 200W
HAZARDOUS LOCATION LED

PROJECT

CATALOG #

TYPE

Rev: 08 2022

- Class I - Div 1: Groups C, D
- Class I - Div 2: Groups A, B, C, D
- Class II - Div 1: Groups E, F, G
- Class II - Div 2: Group E, F, G
- Class III
- IP66 & IK10 Rated
- NEMA 4X



POWER

Available from 20W up to 200W Configurations

PRECISION

Custom-Engineered Optics Offer Precisely Directed Light

ENGINEERING

A383 Die Cast Aluminum Housing and Tempered Glass Lens

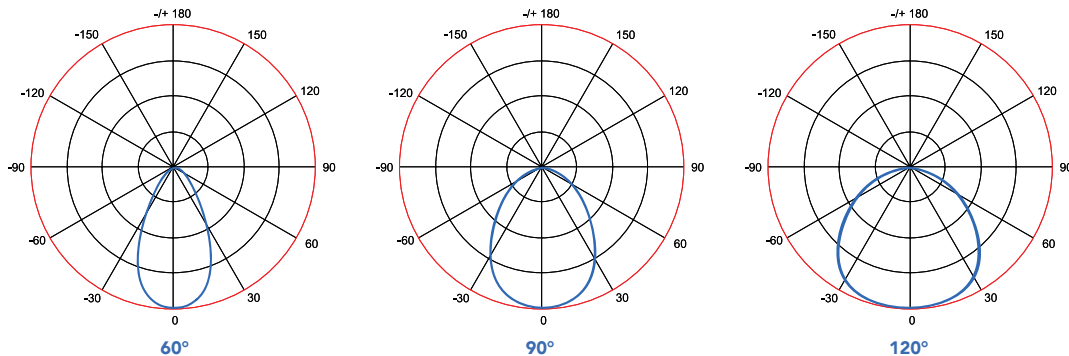
ORDERING INFORMATION

EXAMPLE PART #: DELB - 100 - 40K - 40 - V01 - GR - PM - NDIM

DELB				GR			
SERIES	WATTS	CCT	OPTICS	INPUT PWR	FINISH	MOUNTING	DIMMING
DELB	20	35K*	60	V01 110/277V	GR	TM Trunnion Mount (Wall, Ceiling & Floor)	NDIM No Dimming
	40	40K	90	V04 347/480V		PM Pendant Mount**	VDIM 0-10V Dimmable
	60	50K	120			JBT Junction Box w/Pendant**	
	80	57K				WM25 25° Wall Mount & Junction Box: 3/4" NPT**	
	100					WM90 90° Wall Mount & Junction Box: 3/4" NPT**	
	150					WM90S 90° Wall Mount**	
	180					PL25 25° Pole Mount: 1-1/2" NPT**	
	200					PL90 90° Pole Mount: 1-1/2" NPT**	

- NOTES**
- 20W, 40W, 60W & 80W Only Available in V01 110/277V
 - *35K Available; Please Consult Factory for Lead Times
 - **Mounting Not Available in 100W, 150W, 180W & 200W

OPTICS



SPECIFICATIONS

Expected Life | Over 85,000 hrs.
Rating | IP66 & IK10
Color Rendering Index (CRI) | 70
Operating Temp | 20-150W: -40°C to +55°C
 180-200W: -40°C to +45°C
Relative Humidity | 10-90% RH
Power Factor | >.95
Input Line Voltage | 90-305 / 200-525 VAC
Input Line Frequency | 50/60 Hz
LED Chips | Philips
Driver | Meanwell
Surge Protection | 10KV
DC Output Ripple & Noise | <200mVP-P
T-Rating | T4

LISTINGS

UL 1598A Marine Listed
UL 1598 Listed
UL 844 Listed

- Class I, Division 1, Groups C,D
- Class I, Division 2, Groups A,B,C,D
- Class II, Division 1, Groups E,F,G
- Class II, Division 2, Groups E,F,G
- Class III
- NEMA 4X

MATERIALS

Housing | A383 Die Cast Aluminum
Gasketing | Fluorosilicone Rubber
Hardware | Stainless Steel 304
Finish | Polyester Powdercoat
Lens | Tempered Glass

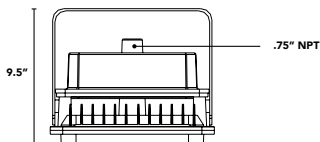
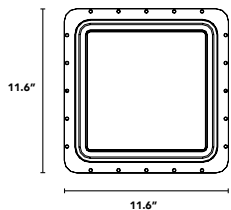
LUMEN CHART

	3500K	4000K	5000K	5700K
20W	2,400 lm	2,560 lm	2,700 lm	2,800 lm
40W	4,800 lm	5,120 lm	5,400 lm	5,600 lm
60W	7,200 lm	7,680 lm	8,100 lm	8,400 lm
80W	9,600 lm	10,240 lm	10,800 lm	11,200 lm
100W	12,000 lm	12,800 lm	13,500 lm	14,000 lm
150W	18,000 lm	19,200 lm	20,250 lm	21,000 lm
180W	21,600 lm	23,040 lm	24,300 lm	25,200 lm
200W	24,000 lm	25,600 lm	27,000 lm	28,000 lm

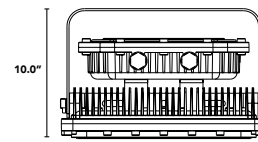
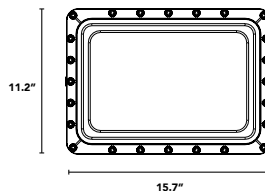
Typical delivered lumen data is approximate. Actual lumens will vary due to installation environment and beam pattern. Please see IES files.

PRODUCT DRAWINGS

20W - 40W - 60W - 80W



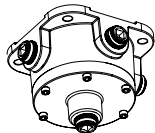
100W - 150W - 180W - 200W



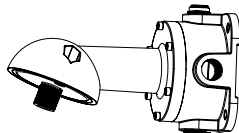
ADDITIONAL MOUNTING OPTIONS

Mounting Options Below are Not Available in 100W, 150W, 180W, & 200W

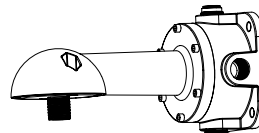
JBT: Junction Box w/ Pendant



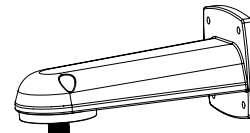
WM25: 25° Wall Mount & Junction Box



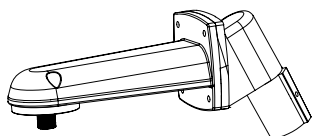
WM90: 90° Wall Mount & Junction Box



WM90S: 90° Wall Mount



PL25: 25° Pole Mount



PL90: 90° Pole Mount

