

# TAURUS-B

## HAZARDOUS LOCATION LED

**10W, 20W, 30W, 40W**  
HAZARDOUS LOCATION LED

- Class I - Div 1: Groups C, D
- UL 1598A Marine Listed
- IP66 Rated
- IK10 Rated
- NEMA 4X



TAUB Shown With Optional DL Drop Lens



### POWER

Available in 10W, 20W, 30W and 40W Configurations

### PRECISION

Custom-Engineered Optics Offer Precisely Directed Light

### ENGINEERING

A383 Die Cast Aluminum Housing and Tempered Glass Lens

## ORDERING INFORMATION

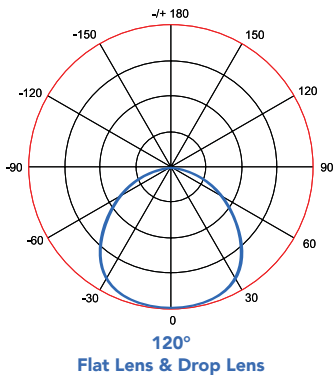
EXAMPLE PART #: TAUB - 20 - 40K - 120 - V01 - GR - CM - NDIM - DL

TAUB	120	V01	GR					
SERIES	WATTS	CCT	OPTICS	INPUT PWR	FINISH	MOUNTING	DIMMING	LENS
TAUB	10 20 30 40	35K* 40K 50K 57K	120	V01   110/277V	GR	<b>CM</b>   Ceiling Mount <b>PM</b>   Pendant Mount <b>JBT</b>   Junction Box w/Pendant <b>WM25</b>   25° Wall Mount & Junction Box: 3/4" NPT <b>WM90</b>   90° Wall Mount & Junction Box: 3/4" NPT <b>WM90S</b>   90° Wall Mount <b>PL25</b>   25° Pole Mount: 1-1/2" NPT <b>PL90</b>   90° Pole Mount: 1-1/2" NPT	<b>NDIM</b>   No Dimming <b>VDIM</b>   0-10V Dimmable	<b>DL</b>   Drop Lens <b>FL</b>   Flat Lens

### NOTES

- DL Drop Lens Includes Wire Guard
- \*35K Available; Please Consult Factory for Lead Times

## OPTICS



Due to continuous improvement and innovation, product appearance and specifications may change without notice. Actual performance may differ as a result of end-user environment and application.

# TAURUS-B

HAZARDOUS LOCATION LED

## SPECIFICATIONS

**Expected Life** | Over 85,000 hrs.  
**Rating** | IP66 & IK10  
**Color Rendering Index (CRI)** | 70  
**Operating Temp** | -40°C – +65°C  
**Relative Humidity** | 10-90% RH  
**Power Factor** | >.95  
**Input Line Voltage** | 90-305  
**Input Line Frequency** | 50/60 Hz  
**LED Chips** | Philips  
**Driver** | Meanwell  
**Surge Protection** | 10KV  
**DC Output Ripple & Noise** | <200mVP-P  
**T-Rating** | T4

## LISTINGS

**UL 1598A Marine Listed**  
**UL 1598 Listed**  
**UL 844 Listed**  
- Class I, Division 1, Groups C,D  
- NEMA 4X

## MATERIALS

**Housing** | A383 Die Cast Aluminum  
**Gasketing** | Fluorosilicone Rubber  
**Hardware** | Stainless Steel 304  
**Finish** | Polyester Powdercoat  
**Lens** | Tempered Glass

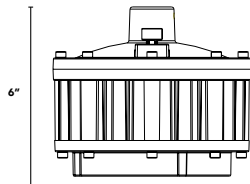
## LUMEN CHART

	3500K	4000K	5000K	5700K
10W	1,200 lm	1,280 lm	1,350 lm	1,400 lm
20W	2,400 lm	2,560 lm	2,700 lm	2,800 lm
30W	3,600 lm	3,840 lm	4,050 lm	4,200 lm
40W	4,800 lm	5,120 lm	5,400 lm	5,600 lm

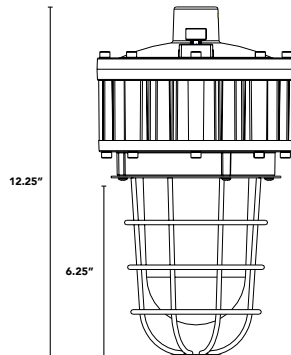
Typical delivered lumen data is approximate. Actual lumens will vary due to installation environment and beam pattern. Please see IES files.

## PRODUCT DRAWINGS

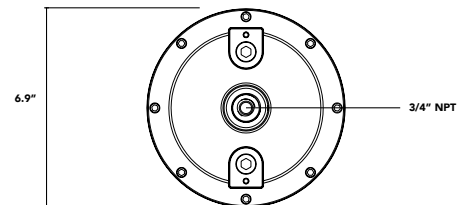
Flat Lens w/ Pendant Mount



Drop Lens with Wire Guard w/ Pendant Mount

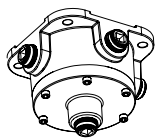


Ceiling Mounting Plate

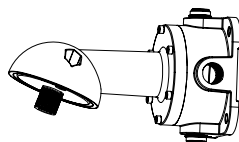


## ADDITIONAL MOUNTING OPTIONS

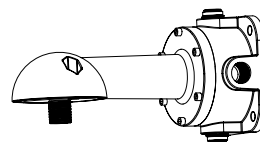
JBT: Junction Box w/ Pendant



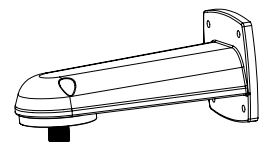
WM25: 25° Wall Mount & Junction Box



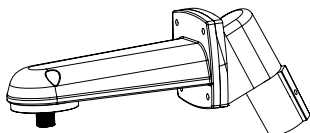
WM90: 90° Wall Mount & Junction Box



WM90S: 90° Wall Mount



PL25: 25° Pole Mount



PL90: 90° Pole Mount

