

TITAN-A

HAZARDOUS LOCATION LED

20W, 40W, 60W, 80W, 100W, 150W, 200W
HAZARDOUS LOCATION LED

- Class I - Div 2: Groups A, B, C, D
- Class II - Div 1: Groups E, F, G
- Class II - Div 2: Group F, G
- Class III
- UL 844
- IP66 & IK10 Rated
- NEMA 4X

PROJECT

CATALOG #

TYPE

Rev: 08 2022



POWER

Available from 20W up to 200W Configurations

PRECISION

Custom-Engineered Optics Offer Precisely Directed Light

ENGINEERING

A383 Die Cast Aluminum Housing and Tempered Glass Lens

ORDERING INFORMATION

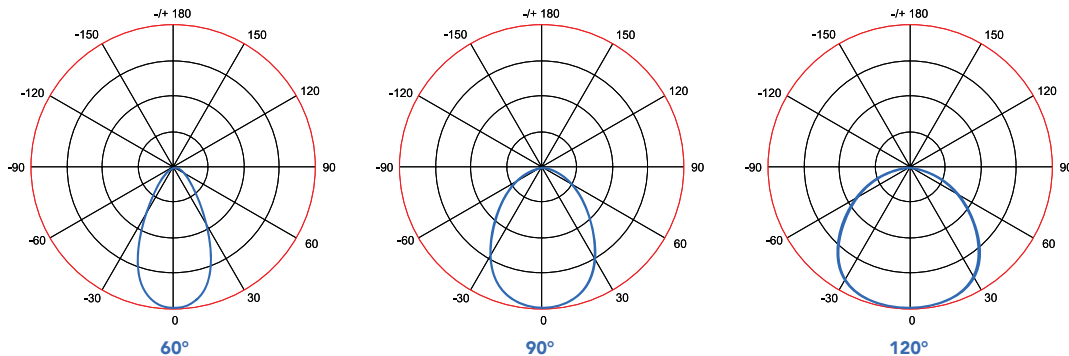
EXAMPLE PART #: TITA - 100 - 40K - 60 - V01 - GR - PM - NDIM

TITA				GR			
SERIES	WATTS	CCT	OPTICS	INPUT PWR	FINISH	MOUNTING	DIMMING
TITA	20	35K*	60	V01 110/277V	GR	TM Trunion Mount	NDIM No Dimming
	40	40K	90	V04 347/480V		PM Pendant Mount	VDIM 0-10V Dimmable
	60	50K	120			JBT Junction Box w/Pendant	
	80	57K				WM25 25° Wall Mount & Junction Box: 3/4" NPT	
	100					WM90 90° Wall Mount & Junction Box: 3/4" NPT	
	150					WM90S 90° Wall Mount	
	200					PL25 25° Pole Mount: 1-1/2" NPT	
						PL90 90° Pole Mount: 1-1/2" NPT	

NOTES

- 20W, 40W & 60W Only Available in V01 110/277V
- *35K Available; Please Consult Factory for Lead Times

OPTICS



Due to continuous improvement and innovation, product appearance and specifications may change without notice. Actual performance may differ as a result of end-user environment and application.

SPECIFICATIONS

Expected Life | Over 85,000 hrs.
Rating | IP66 & IK10
Color Rendering Index (CRI) | 70
Operating Temp | -20W-80W: -40°C to +50°C
 100W-200W: -40°C to +40°C
Relative Humidity | 10-90% RH
Power Factor | >.95
Input Line Voltage | 90-305 / 200-525 VAC
Input Line Frequency | 50/60 Hz
LED Chips | Philips
Driver | Meanwell
Surge Protection | 10KV
DC Output Ripple & Noise | <200mVP-P
T-Rating | T3

LISTINGS

UL 1598A Marine Listed
UL 844 Listed
 - Class I, Division 2, Groups A,B,C,D
 - Class II, Division 1, Groups E,F,G
 - Class II, Division 2, Groups F,G
 - Class III
 - NEMA 4X

MATERIALS

Housing | A383 Die Cast Aluminum
Gasketing | Fluorosilicone Rubber
Hardware | Stainless Steel 304
Finish | Polyester Powdercoat
Lens | Tempered Glass

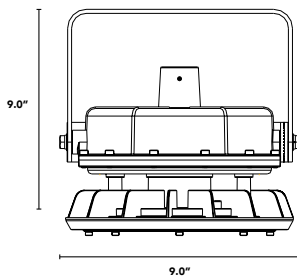
LUMEN CHART

	3500K	4000K	5000K	5700K
20W	2,400 lm	2,560 lm	2,700 lm	2,800 lm
40W	4,800 lm	5,120 lm	5,400 lm	5,600 lm
60W	7,200 lm	7,680 lm	8,100 lm	8,400 lm
80W	9,600 lm	10,240 lm	10,800 lm	11,200 lm
100W	12,000 lm	12,800 lm	13,500 lm	14,000 lm
150W	18,000 lm	19,200 lm	20,250 lm	21,000 lm
200W	24,000 lm	25,600 lm	27,000 lm	28,000 lm

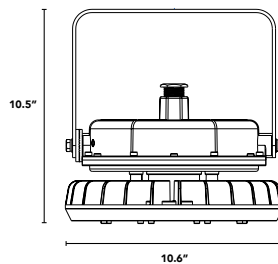
Typical delivered lumen data is approximate. Actual lumens will vary due to installation environment and beam pattern. Please see IES files.

PRODUCT DRAWINGS

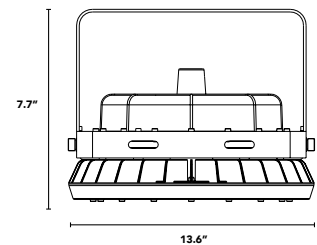
20W - 40W - 60W



80W - 100W

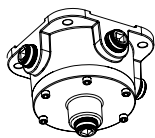


150W - 200W

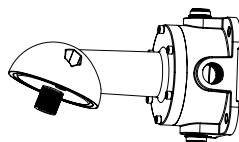


ADDITIONAL MOUNTING OPTIONS

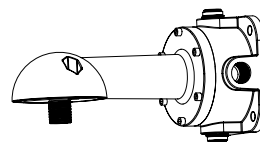
JBT: Junction Box w/ Pendant



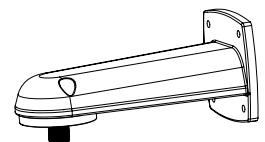
WM25: 25° Wall Mount & Junction Box



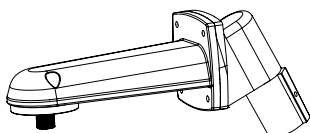
WM90: 90° Wall Mount & Junction Box



WM90S: 90° Wall Mount



PL25: 25° Pole Mount



PL90: 90° Pole Mount

